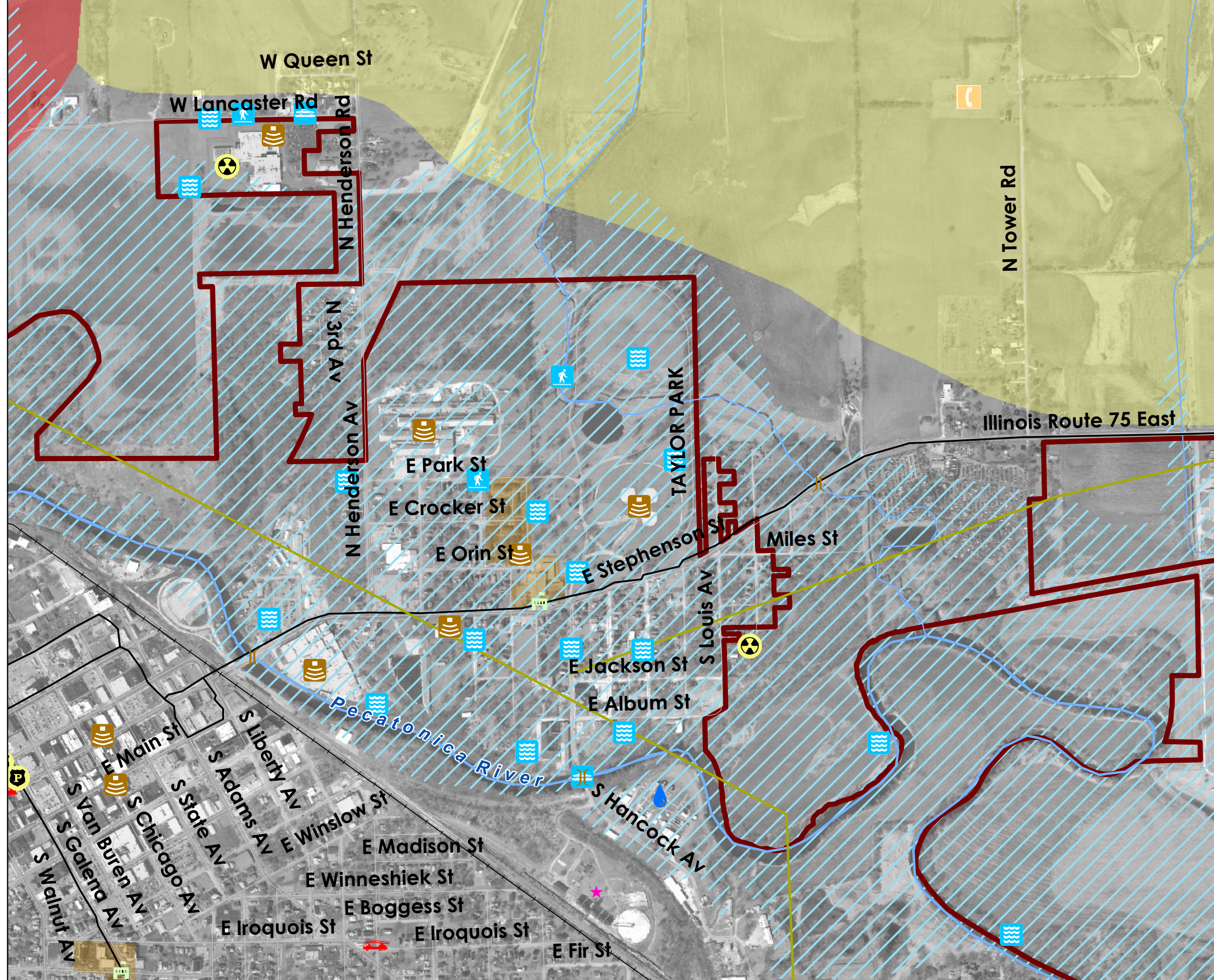


Stephenson County Multi-Hazard Mitigation Plan

Map 4 Risk Assessment - East Side, Freeport



Jurisdictional Boundaries

- Municipal Boundary
- Township Boundary
- County Boundary

Infrastructure

- Existing Road
- Existing Highway
- Railroad
- Natural Gas Pipeline (General Location)
- Airport
- Power Facility
- Fire Station
- Police Station
- Wastewater Treatment Plant
- Communications Facility
- Dam
- Bridge
- Surface Water

Area of Hazard Vulnerability/History

- 100-year Floodplain
- Flashflooding
- Flood
- Road Washout
- Constrained Waterway
- Severe Storm (Wind, Lightning, Hail)
- Tornado
- Severe Winter Storm
- Drought

Vulnerability Factors

- Hospital
- School
- Hazardous Material
- Municipal Building
- Critical Facility
- Place of Assembly
- Vulnerable Population

Future Growth Areas

- Residential
- Non-Residential
- Sewer/Water Facility
- Planning Area
- Planned Wind Farm
- Future Road

Created: March 2007
Revised: January 2008

0 375 750 1,500 Feet

Sources: Stephenson County, US Census Bureau, FEMA, ISGS

Vandewalle & Associates
Planning - Creating - Rebuilding