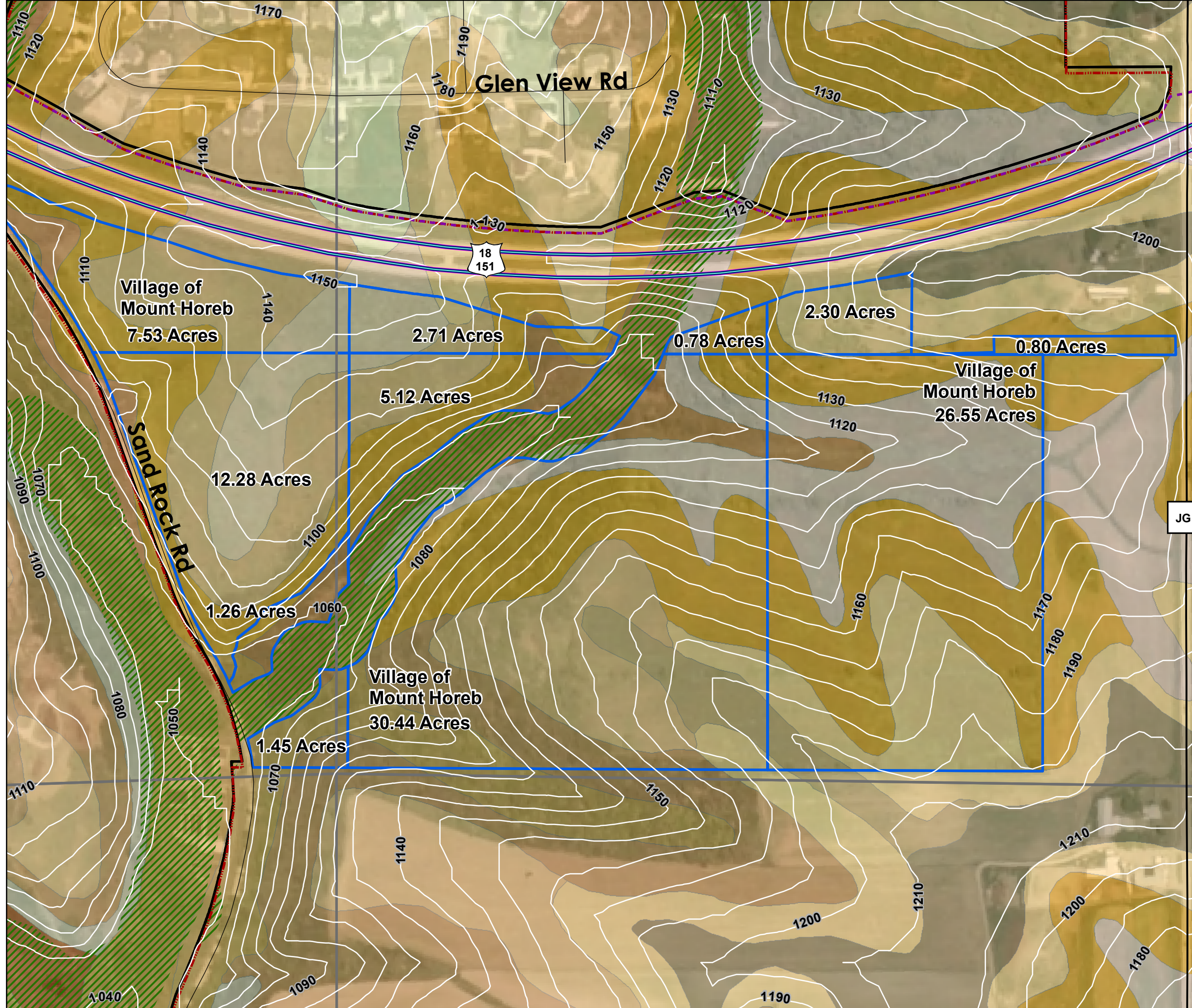


Mount Horeb High School Siting Map

Site 9



- Village of Mount Horeb
- Other Municipal Boundaries
- Urban Service Area (2005)
- Section Line
- Parcels
- Parcels Used for Site Study
- Limited Access Road
- County Highway
- Local Roads
- Contour - 10ft
- Environmental Corridor

- Soil Descriptions
- EdC2 - Edmund silt loam - 6-12% Slope
 - EdD2 - Edmund silt loam - 12-20% Slope
 - DpB - Dodgeville Silt Loam - 2-6% Slope
 - DuB2 - Dunbarton silt loam - 2-6% Slope
 - DuC2 - Dunbarton silt loam - 6-12% Slope
 - DuD2 - Dunbarton silt loam - 12-20% Slope
 - HuB - Huntsville silt loam - 2-6% Slope
 - NeB2 - New Glarus silt loam - 2-6% Slope
 - PrC - Port Byron silt loam - 6-12% Slope
 - SmC2 - Seaton silt loam - 6-12% Slope

Soil types depicted on this map use generalized boundaries identified by the USDA. Actual soil types should be defined through a detailed on-site investigation.

Date: April 29, 2008
 Source: Dane County LIO, V&A, USDA Aerial Imagery (2006), USDA Soils

