

Lee County Illinois - Comprehensive Plan

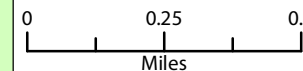
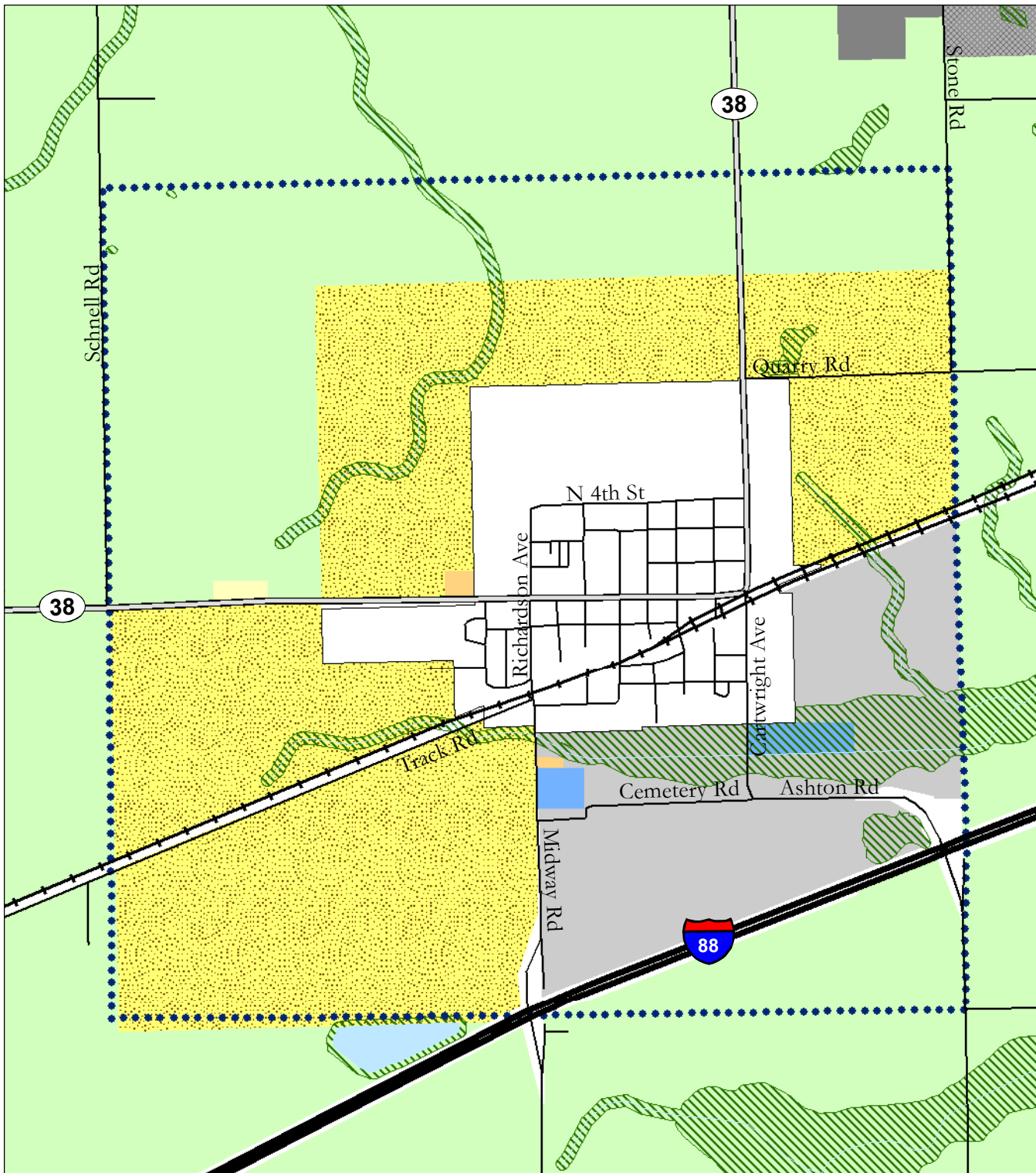
Future Land Use Village of Ashton

-  Lee County
-  Township Boundary
-  Incorporated Municipal Boundary
-  Facility Planning Area
-  Interstate
-  State/U.S. Highway
-  Local Road
-  Railroad
-  Right of Way
-  Surface Water

Future Land Use Categories

-  Rural/Agricultural
-  Rural Residential
-  Single-Family Residential
-  Mixed Residential
-  Planned Neighborhood
-  Neighborhood Office/Business
-  Planned Office
-  Planned Business
-  General Business
-  Central Business
-  Planned Mixed Use
-  Rural Industrial
-  Planned Industrial
-  General Industrial
-  Heavy Industrial
-  Extraction
-  Community Facilities
-  Active Recreation
-  Open Space
-  Passive Recreation
-  Special Recreation
-  Environmental Corridor

DRAFT



VANDEWALLE & ASSOCIATES INC.
Shaping places, shaping change

Draft: August 31, 2009
Source: Lee County LIO,
ESRI (2008), USGS