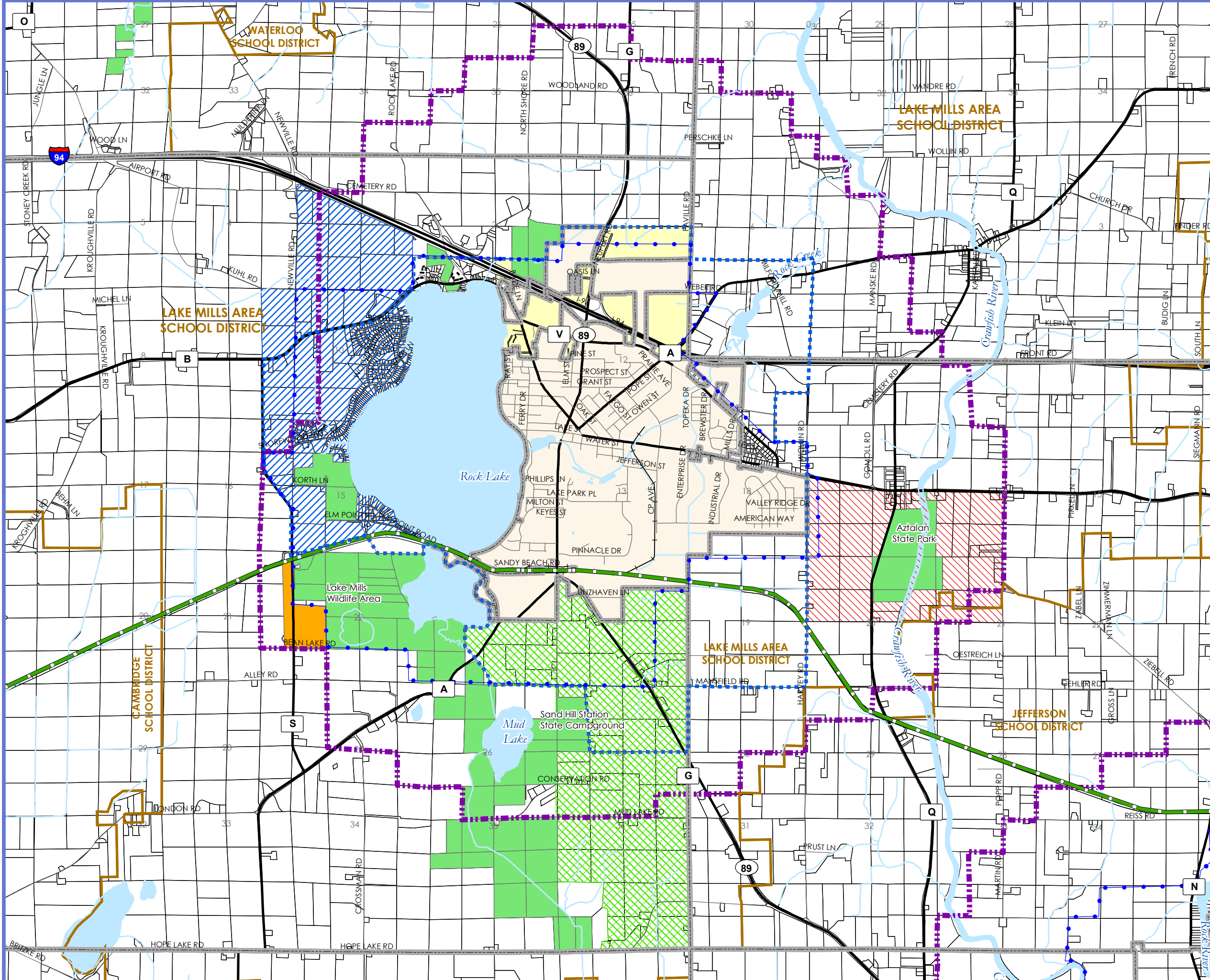




Comprehensive Plan

Existing Intergovernmental Plan Map



- Municipal Boundaries (2008)
- Lake Mills Extraterritorial Area
- Existing Urban Service Area
- Planned Urban Service Area 2030
- School Districts
- Parcels
- Public Parks and Open Space
- Roads
- Railroads
- Glacial Drumlin State Trail
- Water
- City Growth Area - (North) and Joint ETZ Jurisdiction *
- City Growth Area - (South) *
- Town of Lake Mills Growth Area
- Town Growth Area Not Served by City Sewer
- Aztalan State Park Plan Project Area

* Per Intergovernmental Agreement with the Town of Lake Mills

Draft



Date: August 27, 2008
Sources: Jefferson County, City of Lake Mills, V&A

