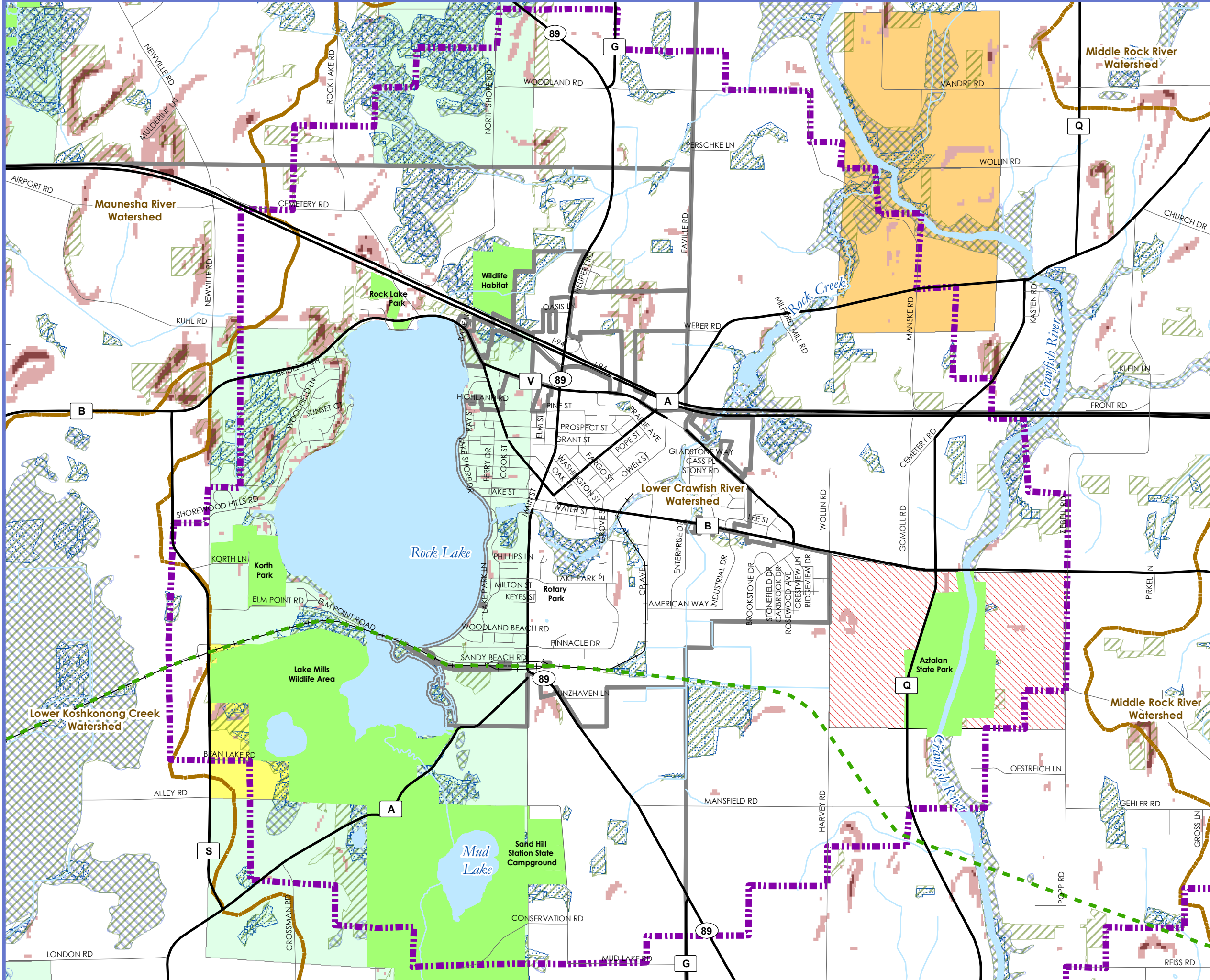




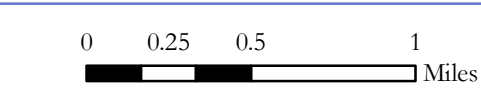
Comprehensive Plan

Natural Features

- Municipal Boundaries
- Lake Mills Extraterritorial Area
- Roads
- Major Roads
- Railroads
- Glacial Drumlin State Trail
- Watersheds
- Parks and Public Open Space
- Wetlands
- Environmental Corridor
- Wetland
- Floodplain
- Water
- Sections Containing Rare or Endangered Species**
- At Least 1 Aquatic Species
- At Least 1 Aquatic and 1 Terrestrial Species
- At Least 1 Terrestrial Species
- Steep Slopes**
- 12% - 20%
- over 20%
- Azatlan State Park Plan Project Area



Draft



Date: August 27, 2008
 Sources: Jefferson County, WiDNR, Strand, V&A

