



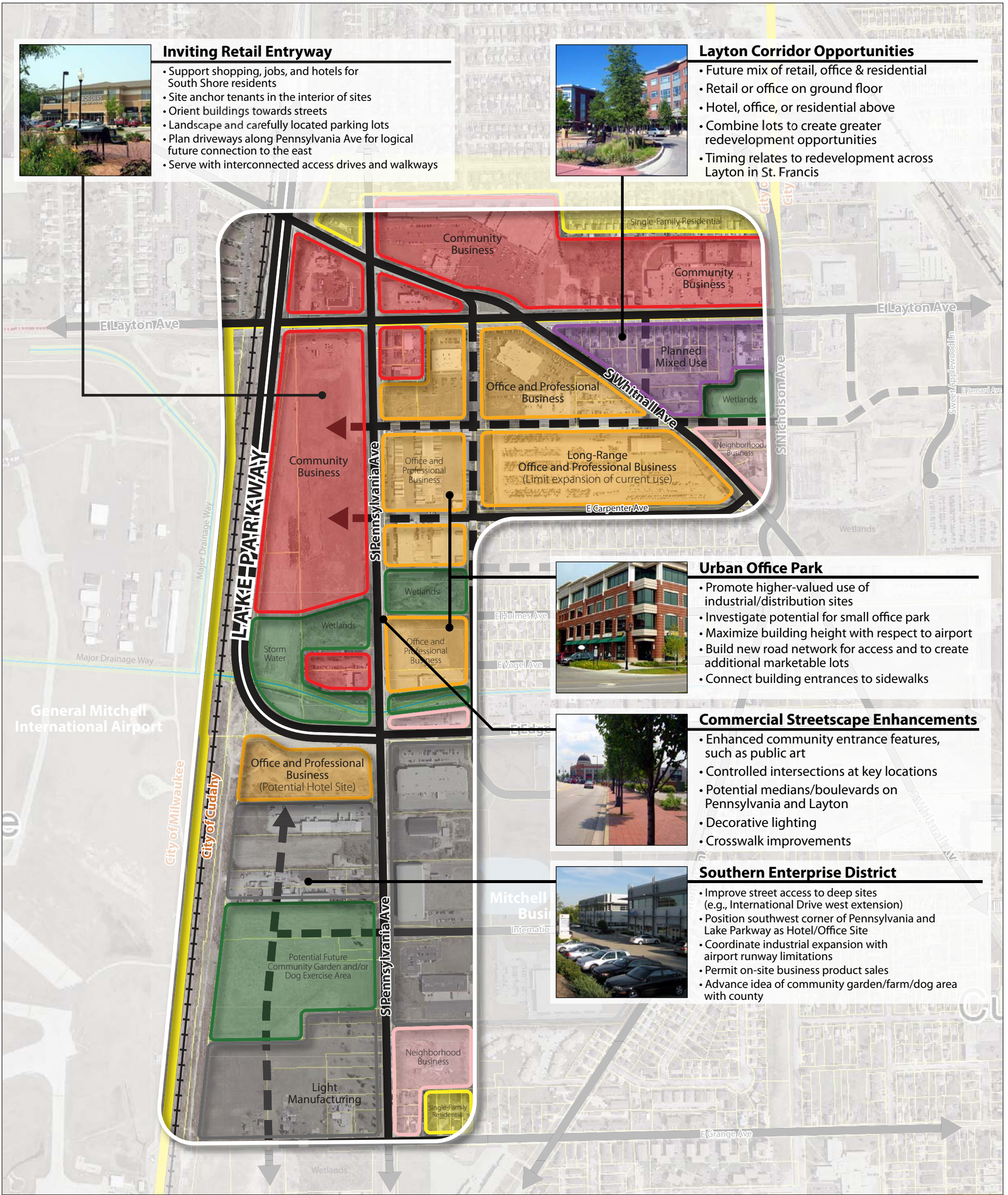
Inviting Retail Entryway

- Support shopping, jobs, and hotels for South Shore residents
- Site anchor tenants in the interior of sites
- Orient buildings towards streets
- Landscape and carefully located parking lots
- Plan driveways along Pennsylvania Ave for logical future connection to the east
- Serve with interconnected access drives and walkways



Layton Corridor Opportunities

- Future mix of retail, office & residential
- Retail or office on ground floor
- Hotel, office, or residential above
- Combine lots to create greater redevelopment opportunities
- Timing relates to redevelopment across Layton in St. Francis



Urban Office Park

- Promote higher-valued use of industrial/distribution sites
- Investigate potential for small office park
- Maximize building height with respect to airport
- Build new road network for access and to create additional marketable lots
- Connect building entrances to sidewalks



Commercial Streetscape Enhancements

- Enhanced community entrance features, such as public art
- Controlled intersections at key locations
- Potential medians/boulevards on Pennsylvania and Layton
- Decorative lighting
- Crosswalk improvements



Southern Enterprise District

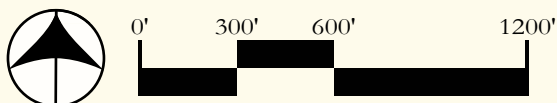
- Improve street access to deep sites (e.g., International Drive west extension)
- Position southwest corner of Pennsylvania and Lake Parkway as Hotel/Office Site
- Coordinate industrial expansion with airport runway limitations
- Permit on-site business product sales
- Advance idea of community garden/farm/dog area with county



Cudahy 2020
Comprehensive Plan
Layton/Pennsylvania Gateway District

CONCEPT PLAN

DRAFT



VANDEWALLE & ASSOCIATES INC.

Created: 10.8.08
Revised: 10.22.08, 11.18.08, 11.21.08, 11.25.08, 2.24.09

- Position as City's modern shopping and job center
- Enhance City's northwest gateway
- Redevelop underutilized properties
- Provide transitions between shopping and neighborhoods
- Link future economic opportunities to airport initiatives and constraints

Figure
3.2.1

Aerial Image Base
From Milwaukee County
Imagery - 2005
Parcels - 2006
Municipal Boundaries - 2007