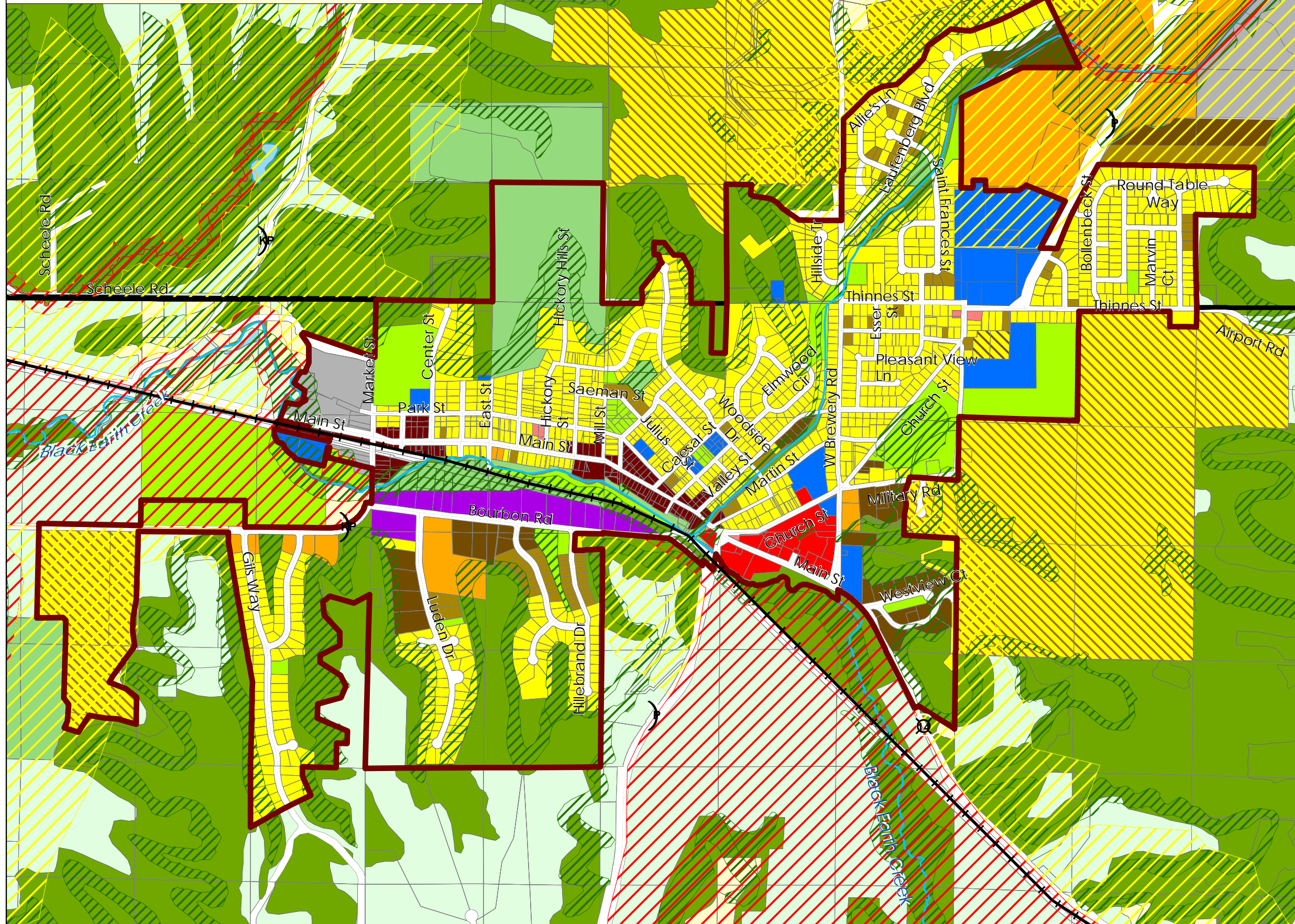


Shapes on map represent general recommendations for future land use. Actual boundaries between different land use categories and associated zoning districts may vary somewhat from representations on this map. Please see the Village's Comprehensive Plan document for specific policies related to the land use categories shown on this map. Existing (not future) land use pattern shown for adjacent towns. Environmental Corridors depicted on this map use generalized boundaries of environmental features identified on air photos by the DNR and Dane County. Actual Environmental Corridor boundaries are to be refined through detailed on-site investigation.

# Village of Cross Plains Comprehensive Plan

## Map 4a: Future Land Use-Village View



**Legend**

- Village of Cross Plains Boundary
- Town Boundaries
- Extraterritorial Boundary
- Parcels
- Railroads
- Surface Water
- Water Quality Corridors**
  - Red Zone
  - Yellow Zone
- Single Family-Exurban
- Single Family-Urban
- Two-Family/Townhouse
- Mixed Residential
- Planned Neighborhood
  - 1. Single Family-Urban
  - 2. Two-Family/Townhouse
  - 3. Mixed Residential
  - 4. Community Facilities
  - 5. Office/Research
  - 6. Planned Business
  - 7. Parks
- Office/Research
- Neighborhood Business
- Planned Business
- Downtown
- Planned Mixed Use
  - 1. Office/Research
  - 2. Mixed Residential
  - 3. Community Facilities
  - 4. Planned Business
- Light Industrial
- General Industrial
- Community Facilities
- Agriculture/Rural
- Parks
- Conservancy
- Woodlands
- Environmental Corridor

**DRAFT**

