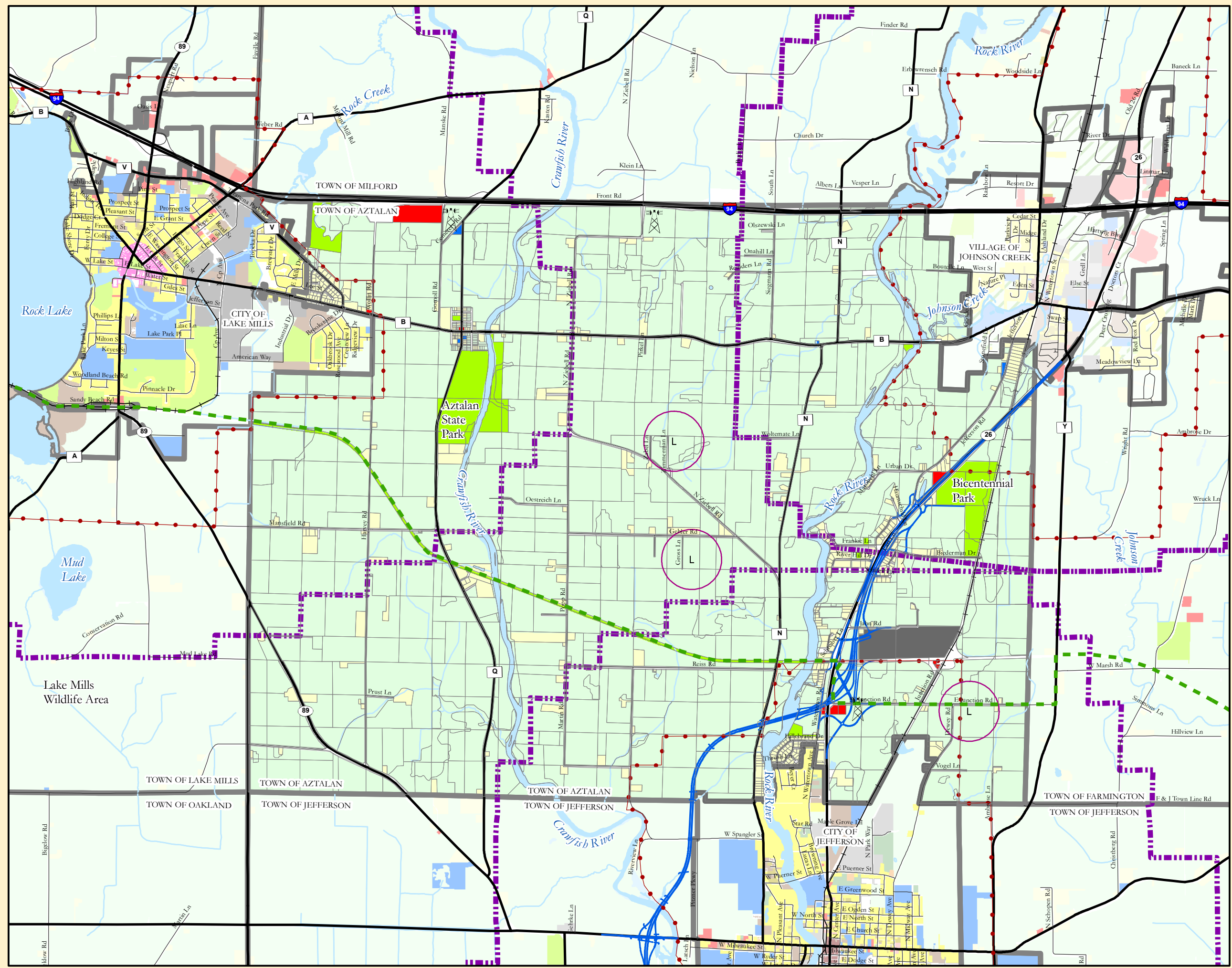


Town of Aztalan Comprehensive Plan

Map 5: Existing Land Use



-  Municipal Boundaries
-  Urban Service Area Boundaries
-  Extraterritorial Jurisdiction Boundaries
-  Parcels
-  Major Roads
-  Local Roads
-  Railroads
-  Hwy 26 Bypass & Related Road Alignments
-  Glacial Drumlin State Trail
-  Cellphone Towers
-  Well Setback Areas From Closed Landfills
-  Surface Water
-  Agriculture and Rural Lands
-  Public Open Space/Recreation
-  Single Family Residential
-  Mixed Residential
-  General Commercial
-  Community Facilities
-  Light Industrial
-  General Industrial
-  Surface Water
-  Right of Way

Sources: Jefferson County LIO, US Census

0 0.3 0.6 1.2 Miles