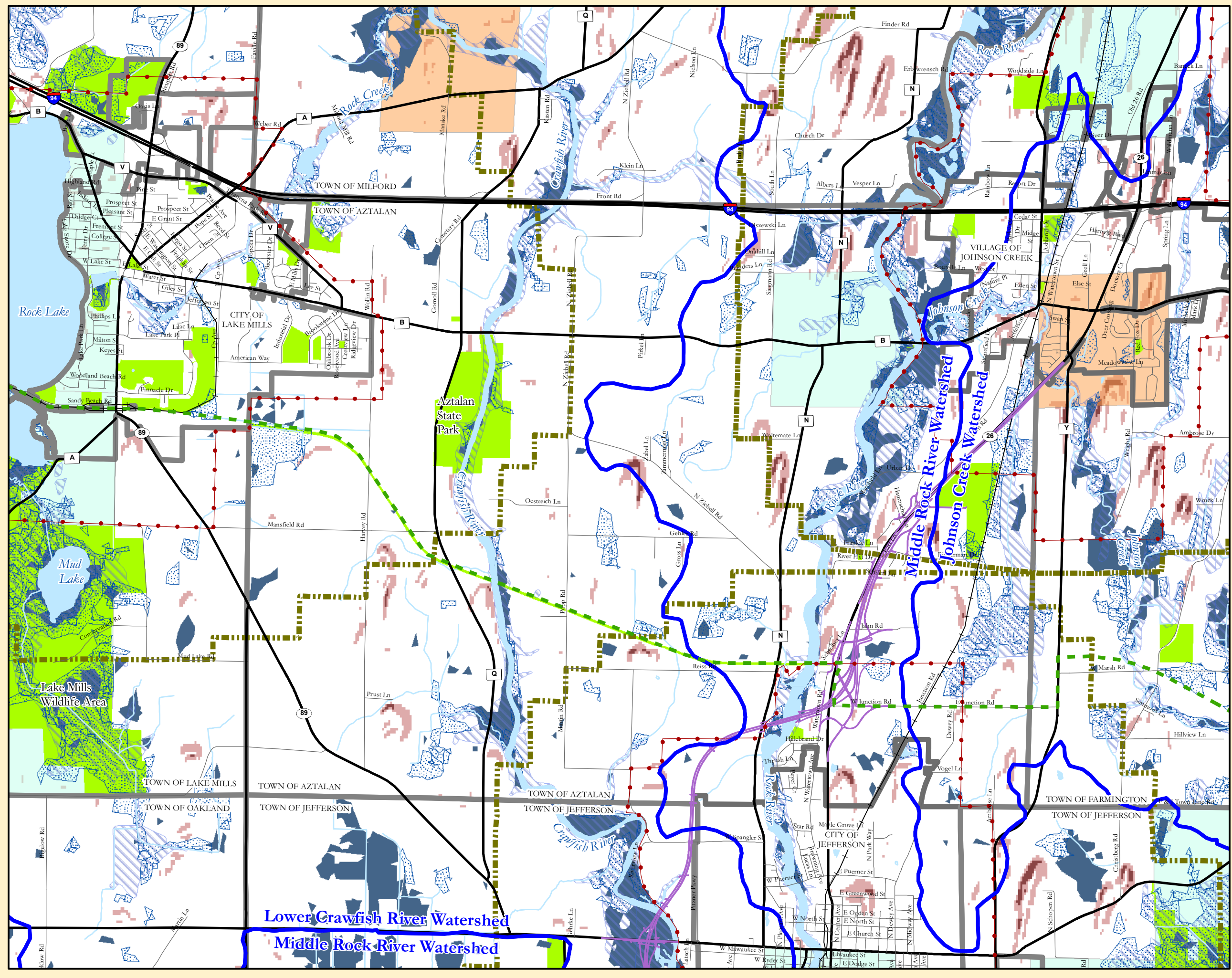


Map 4: Natural Features



- Municipal Boundaries
- Urban Service Area Boundaries
- Extraterritorial Jurisdiction Boundaries
- Major Roads
- Local Roads
- Railroads
- Hwy 26 Bypass & Related Road Alignments
- Glacial Drumlin State Trail
- Surface Water
- Watershed Boundaries
- Public Open Space/Recreation
- Slopes between 12% and 20%
- Slopes greater than 20%
- Woodland (not in public ownership)
- Wetlands
- Floodplain
- Flooding Extent From Summer 2008

Sections Containing Rare/Endangered Species

- At Least 1 Aquatic Species
- At Least 1 Aquatic and 1 Terrestrial Species
- At Least 1 Terrestrial Species

Sources: Jefferson County LIO; US Census; Species Data - WIDNR (2007); Floodplain Data - FEMA (2007); Summer Flood Extent - Dr. Jon Chipman, Dartmouth University & Dr. Sam Batzli, UW-Wisconsin (2008)

